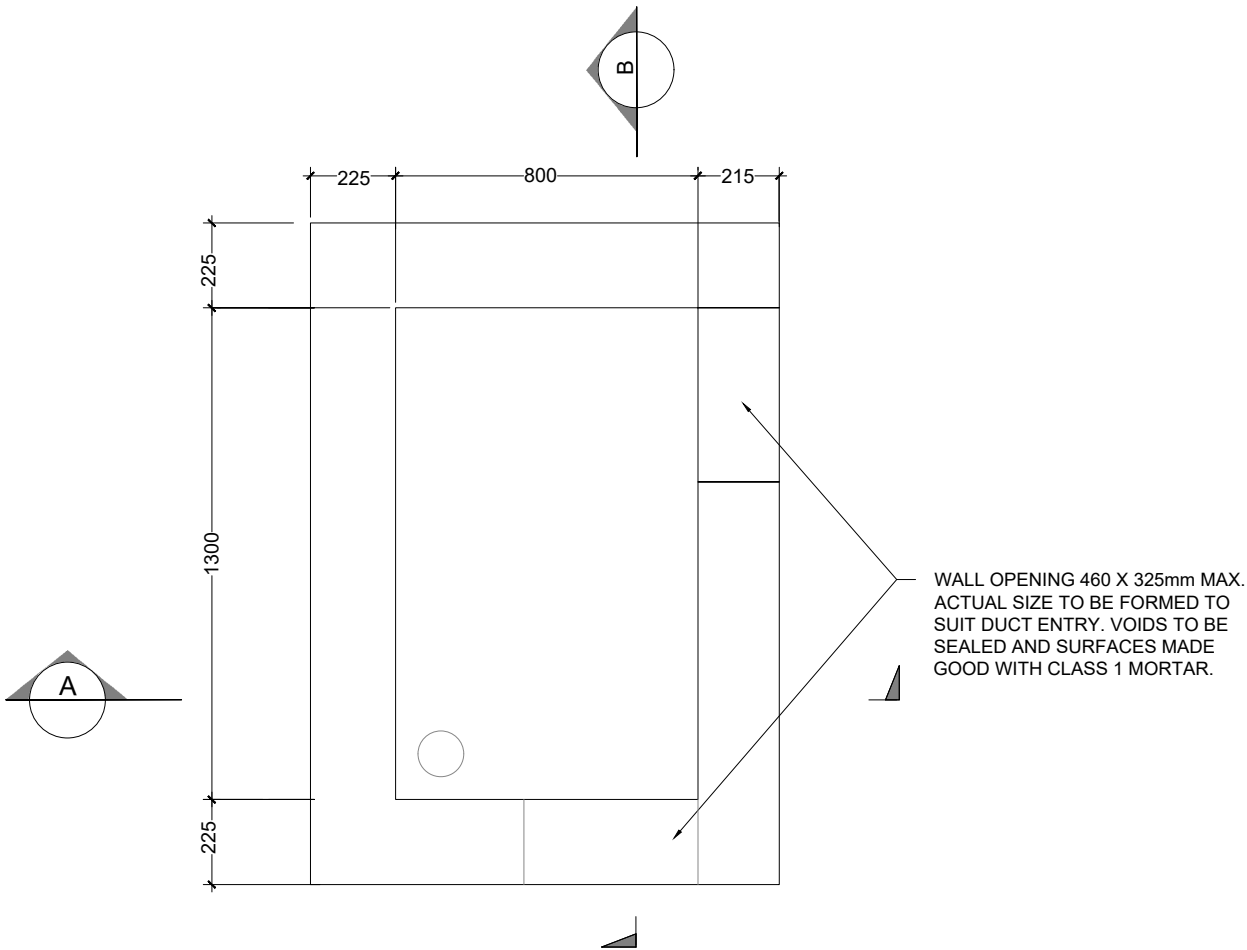
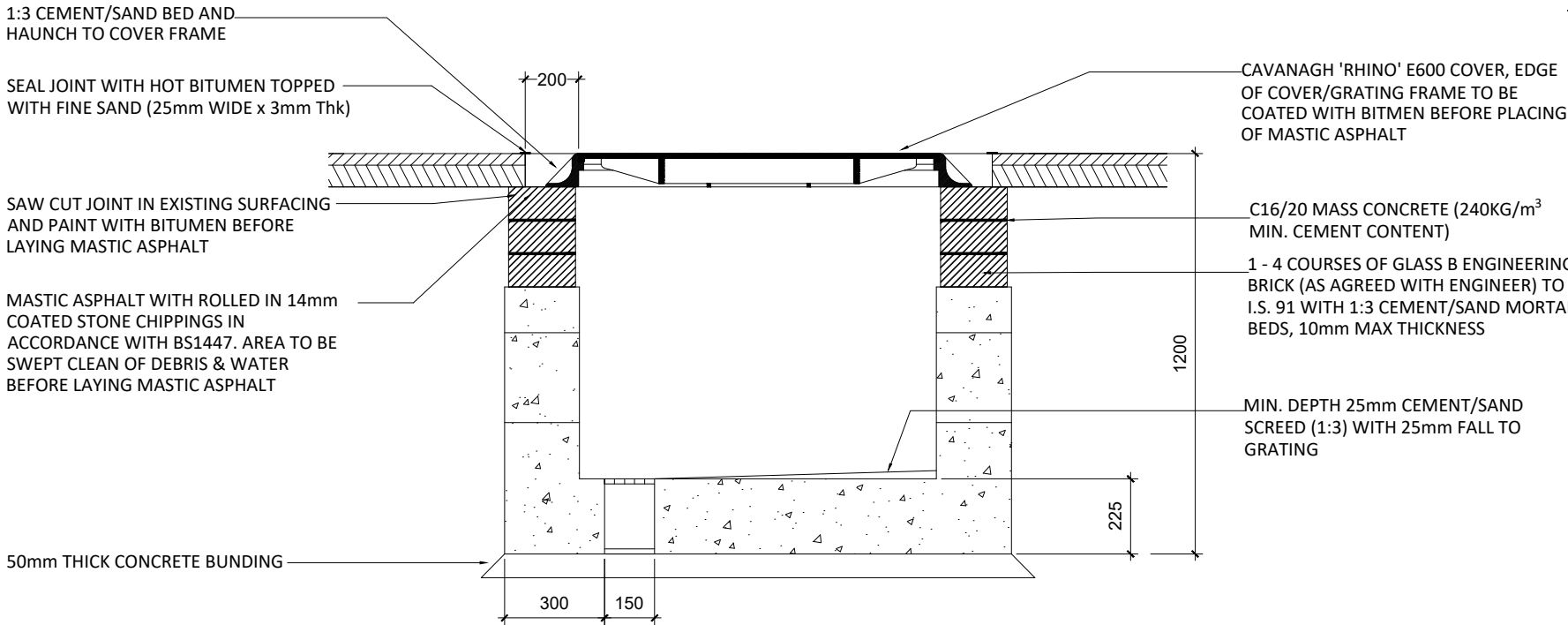


NOTES;

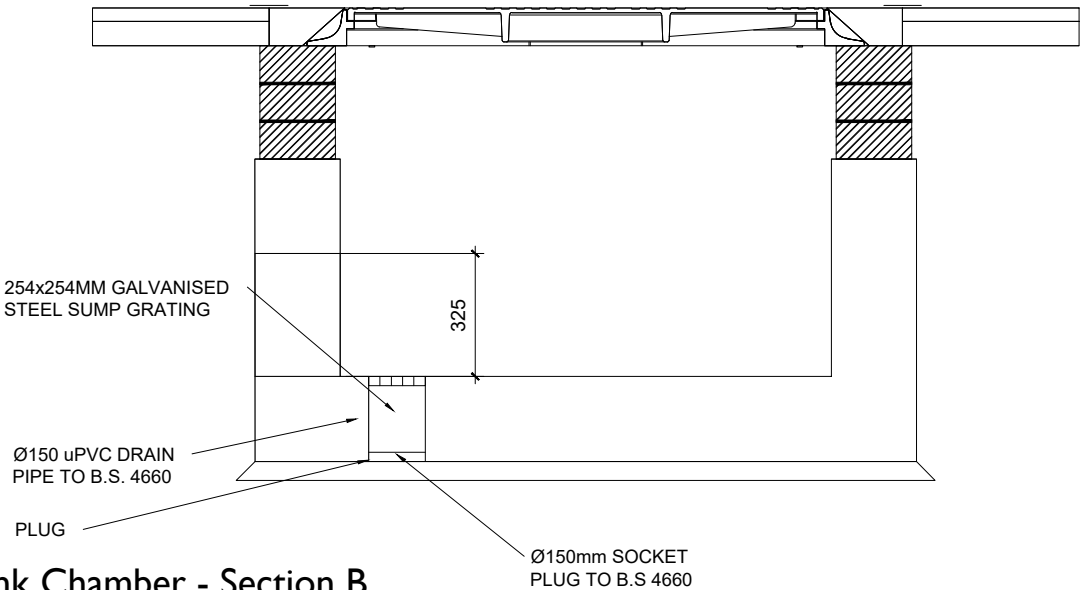
- 1. ALL DIMENSION IN MILLIMETERS UNLESS OTHERWISE STATED
- 2. REINSTATEMENTS TO COMPLY WITH REQUIREMENTS OF THE RELEVANT LOCAL AUTHORITY/ASSET OWNER
- 3. ALL MATERIALS AND WORKMANSHIP TO BE IN ACCORDANCE WITH NRA/T.I.I. SPECIFICATION FOR ROADWORKS, MAY 2005 & SUBSEQUENT REVISIONS
- 4. REINFORCED CONCRETE TO BE MINIMUM GRADE C32 / 40. SULPHATE RESISTING CEMENT TO BE USED WHERE AGGRESSIVE SOIL CONDITIONS APPLY, REFER TO TABLE 6.1 OF THE BRITISH STANDARD 8110.
- 5. CARRAIGEWAY COVERS AND FRAMES TO BE TO B.S EN 124.
- 6. ALL COVERS SHALL HAVE "ESB" LOGO INCORPORATED IN THEM TO THE APPROVAL OF EIRGRID
- 7. FURTHER DETAILS WILL BE PROVIDED BY EIRGRID.
- 8. FINAL POSITION OF EARTH LINK CHAMBERS SHALL BE AGREED WITH EIRGRID



Plan of Earth Link Chamber
SCALE 1:20



Earth Link Chamber - Section A
SCALE 1:20



Earth Link Chamber - Section B
SCALE 1:20



Head Office
Beenreigh,
Abbeydorney,
Tralee, Co. Kerry
Ireland
Tel: 00353 66 7135710



CLIENT
PROJECT
Colehill 110kV
Substation
PROJECT NUMBER
05-1064

SHEET NUMBER
051064-DR-113

SHEET TITLE
Earth Link
Chamber Details
DRAWING STATUS
For Planning

ISSUE/REVISION		
P3	05.11.24	Issued for Planning
P2	30.10.24	Issued for Planning
P1	21.10.24	Issued for Planning
I/R	DATE	DESCRIPTION