

**VEHICLE TRACKING:**

**GRID TRANSFORMER**

Overall Length	24.190m
Overall Width	2.740m
Overall Body Height	4.942m
Min Body Ground Clearance	0.018m
Max Track Width	2.460m
Lock to lock time	6.00s
Kerb to Kerb Turning Radius	6.990m

- NOTES:**
- PROPOSED ROAD ALIGNMENT
  - PROPOSED PERMANENT ROAD WIDENING (SURFACED WITH ASPHALT)

- VEHICLE TRACKING:**
- BODY EXTENTS
  - WHEEL EXTENTS
  - LOAD EXTENTS


- REFERENCES:**
- [1] TOPOGRAPHICAL SURVEY SUPPLIED BY CSS LAND SURVEYS - NOVEMBER 2024.

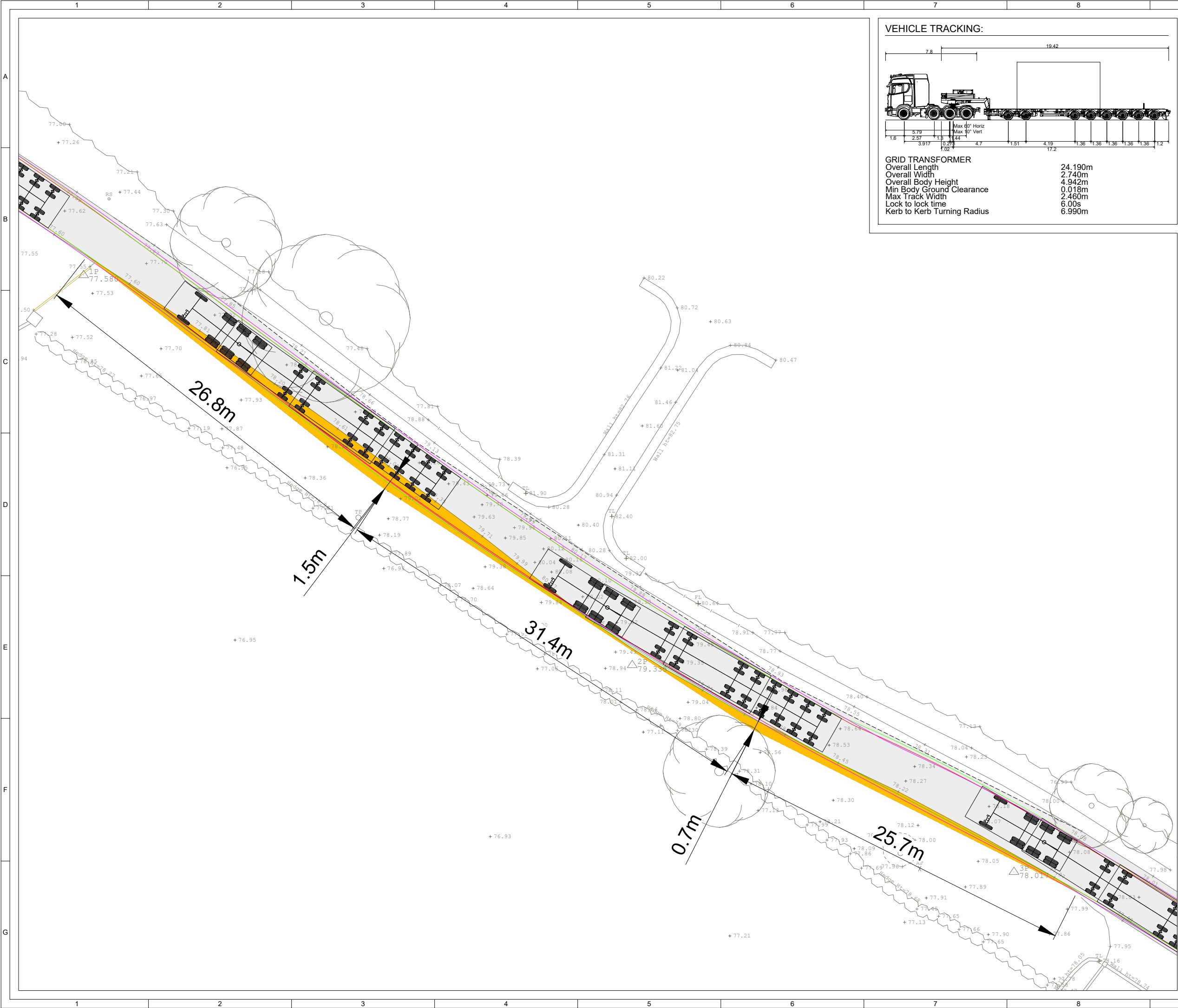
**Produced by:** Francesco Ghergo

**Renewable Energy Systems Ltd**  
Registered Office: Beaufort Court,  
Egg Farm Lane, Kings Langley,  
Hertfordshire WD4 8LR

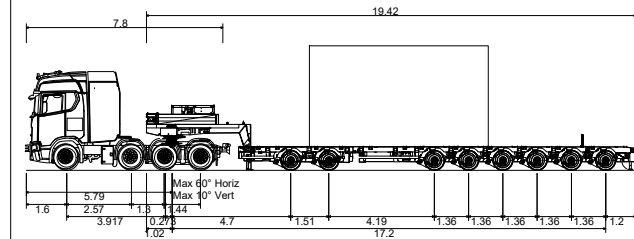
**PINCH POINT 2 - DRIVING TO SITE**  
SHEET 1 OF 2



2	FG	JM	JM	2025-07-04	Minor amend (key updated)	
1	FG	JM	RB	2025-07-04	First Issue	
ISSUE		DRAWN	CHKD	APPD	DATE	REVISION NOTES
PURPOSE				COORDINATES		
PERMITTING				IRENET95 ITM		
SCALE				DATUM		
1:250				@A3		N/A
LAYOUT DRAWING				T-LAYOUT NO		
N/A				N/A		
PROJECT TITLE						
COLEHILL 110KV SUBSTATION						
DRAWING TITLE						
FIGURE 111 PINCH POINT 2 SWEPT PATH ANALYSIS						
RES DRAWING NUMBER						REV
04386-RES-ACC-DR-PT-104						2
THIS DRAWING IS THE PROPERTY OF RENEWABLE ENERGY SYSTEMS LIMITED AND NO REPRODUCTION MAY BE MADE IN WHOLE OR IN PART WITHOUT PERMISSION						
				BEAUFORT COURT, EGG FARM LANE, KINGS LANGLEY, HERTS WD4 8LR. UK TEL +44 (0) 1923 299200 WWW.RES-GROUP.COM		



#### VEHICLE TRACKING:



GRID TRANSFORMER  
Overall Length 24.190m  
Overall Width 2.740m  
Overall Body Height 4.942m  
Min Body Ground Clearance 0.018m  
Max Track Width 2.460m  
Lock to lock time 6.00s  
Kerb to Kerb Turning Radius 6.990m

#### NOTES:

- PROPOSED ROAD ALIGNMENT
- PROPOSED PERMANENT ROAD WIDENING (SURFACED WITH ASPHALT)

#### VEHICLE TRACKING:

- BODY EXTENTS
- WHEEL EXTENTS
- LOAD EXTENTS

#### REFERENCES:


- [1] TOPOGRAPHICAL SURVEY SUPPLIED BY  
CSS LAND SURVEYS - NOVEMBER 2024.

Produced by: Francesco Ghergo

**Renewable Energy Systems Ltd**  
Registered Office: Beaufort Court,  
Egg Farm Lane, Kings Langley,  
Hertfordshire WD4 8LR

#### PINCH POINT 2 - DRIVING FROM SITE SHEET 2 OF 2



2	FG	JM	JM	2025-07-04	Minor amend (key updated)
1	FG	JM	RB	2025-07-04	First Issue
ISSUE	DRAWN	CHKD	APPD	DATE	REVISION NOTES
PURPOSE				COORDINATES	
PERMITTING				IRENET95 ITM	
SCALE				DATUM	
1:250 @A3				N/A	
LAYOUT DRAWING				T-LAYOUT NO	
N/A				N/A	
PROJECT TITLE					
COLEHILL 110KV SUBSTATION					
DRAWING TITLE					
FIGURE 111 PINCH POINT 2 SWEPT PATH ANALYSIS					
RES DRAWING NUMBER					REV
04386-RES-ACC-DR-PT-104					2
THIS DRAWING IS THE PROPERTY OF RENEWABLE ENERGY SYSTEMS LIMITED AND NO REPRODUCTION MAY BE MADE IN WHOLE OR IN PART WITHOUT PERMISSION					
<div><div></div><div><p>BEAUFORT COURT, EGG FARM LANE, KINGS LANGLEY, HERTS WD4 8LR. UK TEL +44 (0) 1923 299200 WWW.RES-GROUP.COM</p></div></div>					