

ISO A1 594mm x 841mm

Project Management Initials: Designer: AD Checked: DB Approved: DB

Map Series:
Prime Data Vector

Discovery Tile Numbers:
OS2220, OS2222, OS2420, OS2422

Tailte Éireann Licence No.
CYAL50492393

Copyright:
© Tailte Éireann, 2025



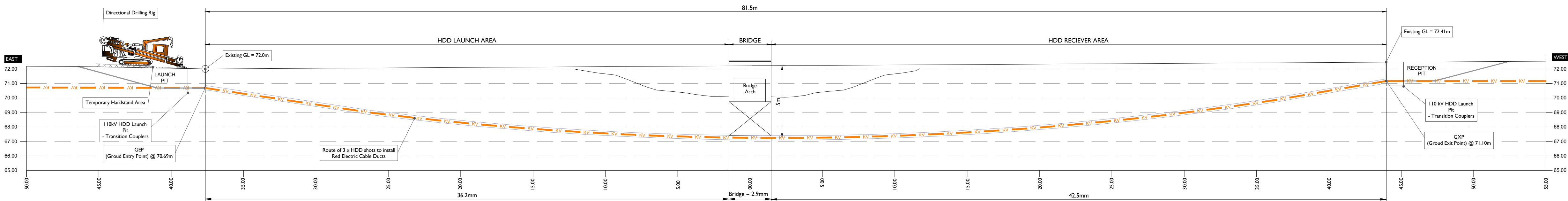
Image 1: Typical Directional Drilling Rig



Image 2: Typical Launch Pit



Street View



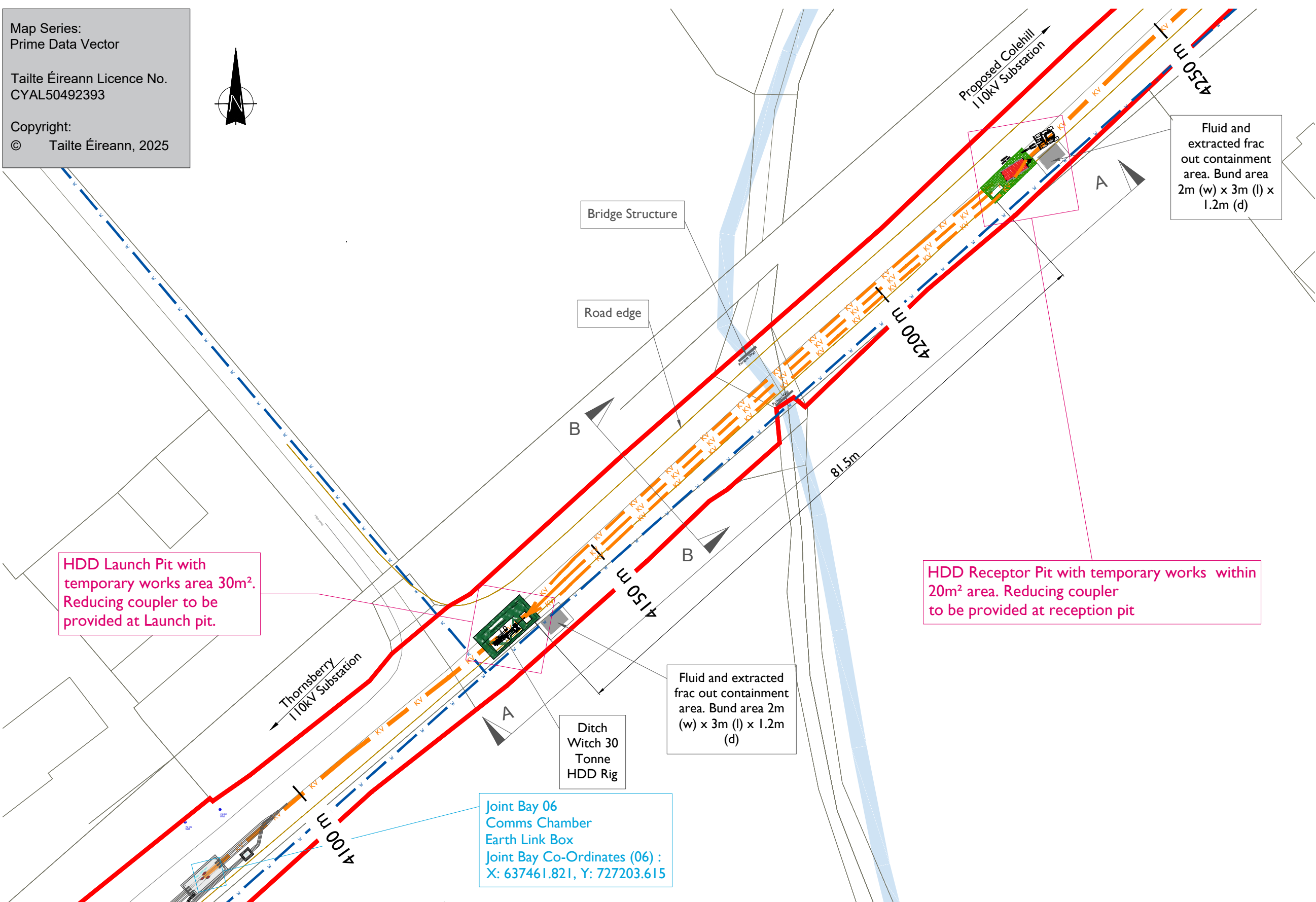
Land Profile for Designed HDD Section (A-A)

Scale: 1:500

Map Series:
Prime Data Vector

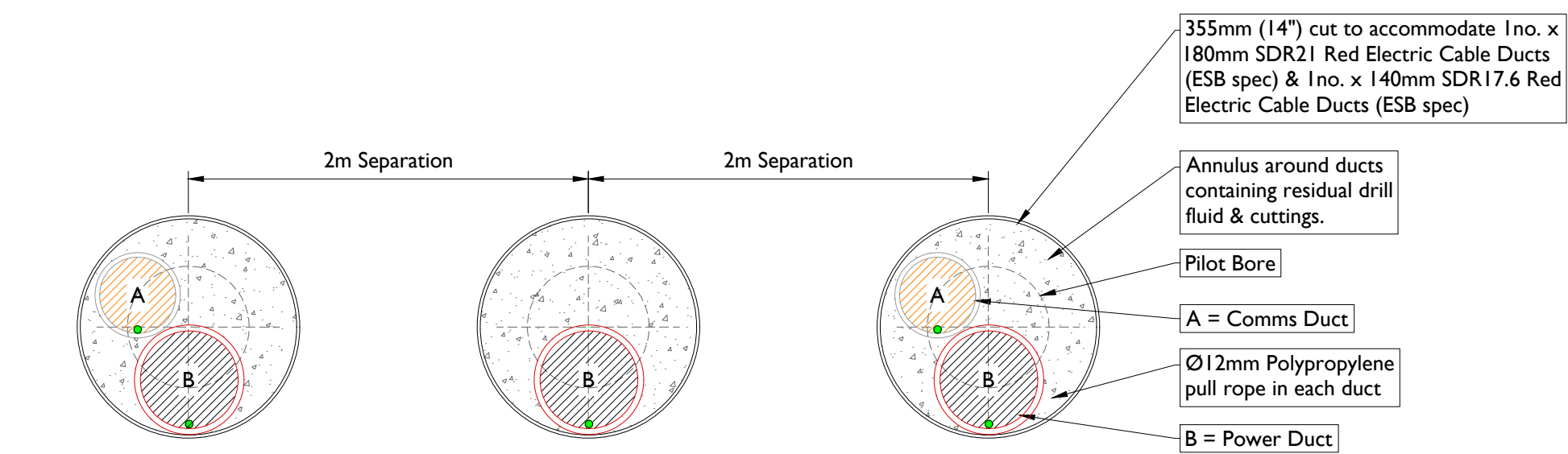
Tailte Éireann Licence No.
CYAL50492393

Copyright:
© Tailte Éireann, 2025

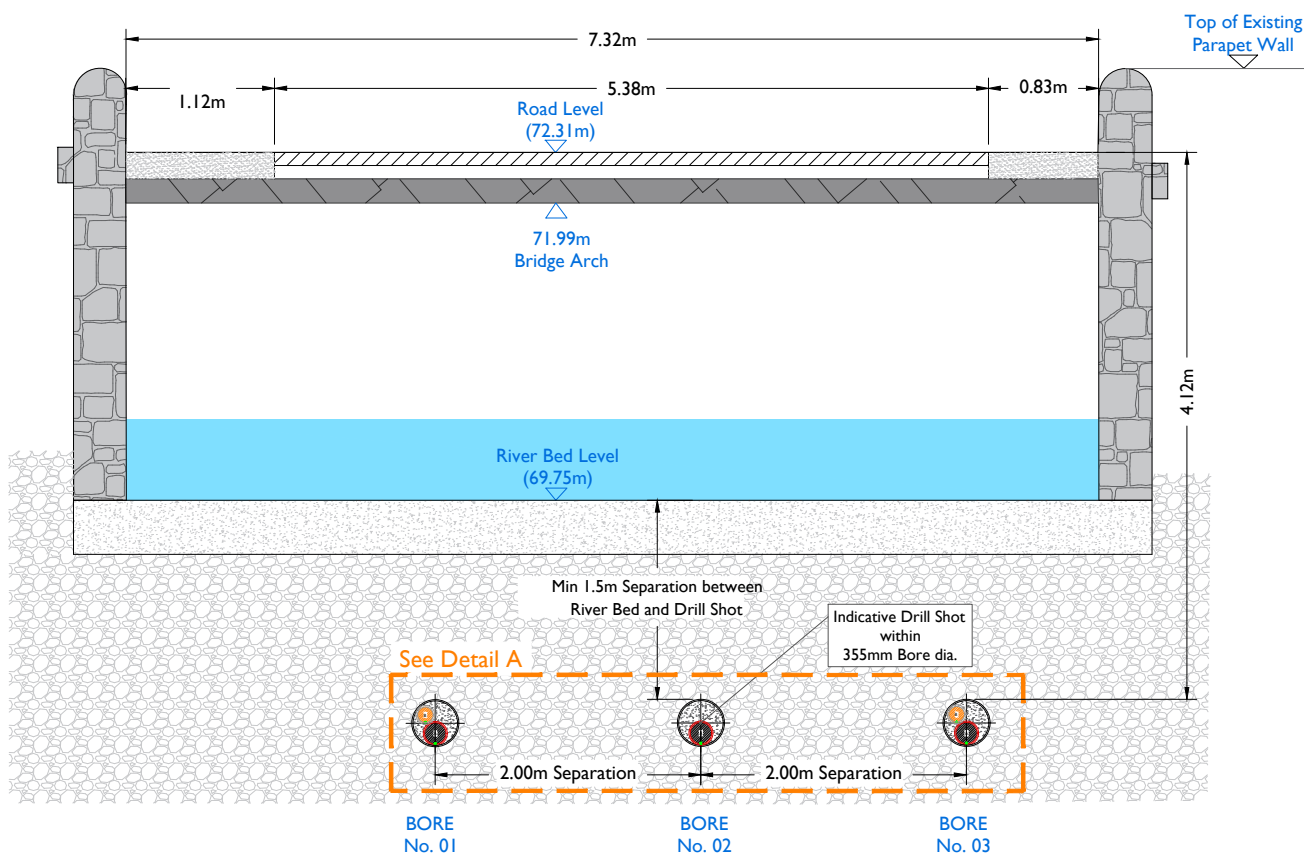


Plan View - Horizontal Drilling Design

Scale: 1:200



Detail A



Typical Section View

HDD Schedule	
110kV	Circuit
	3 x 180mm SDR 21 Red Electric Ducts 2 x 140mm SDR 17.6 Red Electric Ducts
Entry (GEP) Co-Ordinates	X = 637503.639, Y = 727238.256
Exit (GXP) Co-Ordinates	X = 637564.519, Y = 727292.426
HDD Length	• Horizontal Distance - 81.50m • Curve Distance - 82.05m
All HDD ducts to comply with ESB Specification	



Head Office
Beenreigh,
Abbeydorney,
Trillick, Co. Kerry
Ireland
Tel: 00353 66 7135710

Regional Office
Basepoint Business Centre
Stroudley Road, Basingstoke,
Hampshire,
RG24 8UP, UK
Tel: 00 44 1256406664

PROJECT

Colehill 110kV Substation

CLIENT



CONSULTANTS

NOTES: -

- Drawings are in compliance with EirGrid specification requirements for shallow formation, bridge crossings, etc.
- HDD launch and reception pits to be determined following site investigations.
- Bridge Crossing design requires EirGrid approval and may be subject to change.

LEGEND: -

Proposed UGC Grid Route (7.50km) — KV —

Red Line Planning Boundary —

Road Verge shown thus —

Existing Rivers & Streams —

Irish Water Infrastructure shown thus — v —

ISSUE/REVISION

Issue/Revision	Date	Description
N2	19.11.25	Issued for Information
N1	07.11.25	Issued for Information
I/R	DATE	DESCRIPTION

PROJECT NUMBER

05-1064

SHEET TITLE

Bridge I - HDD Crossing Details

SHEET NUMBER

051064-DR-122