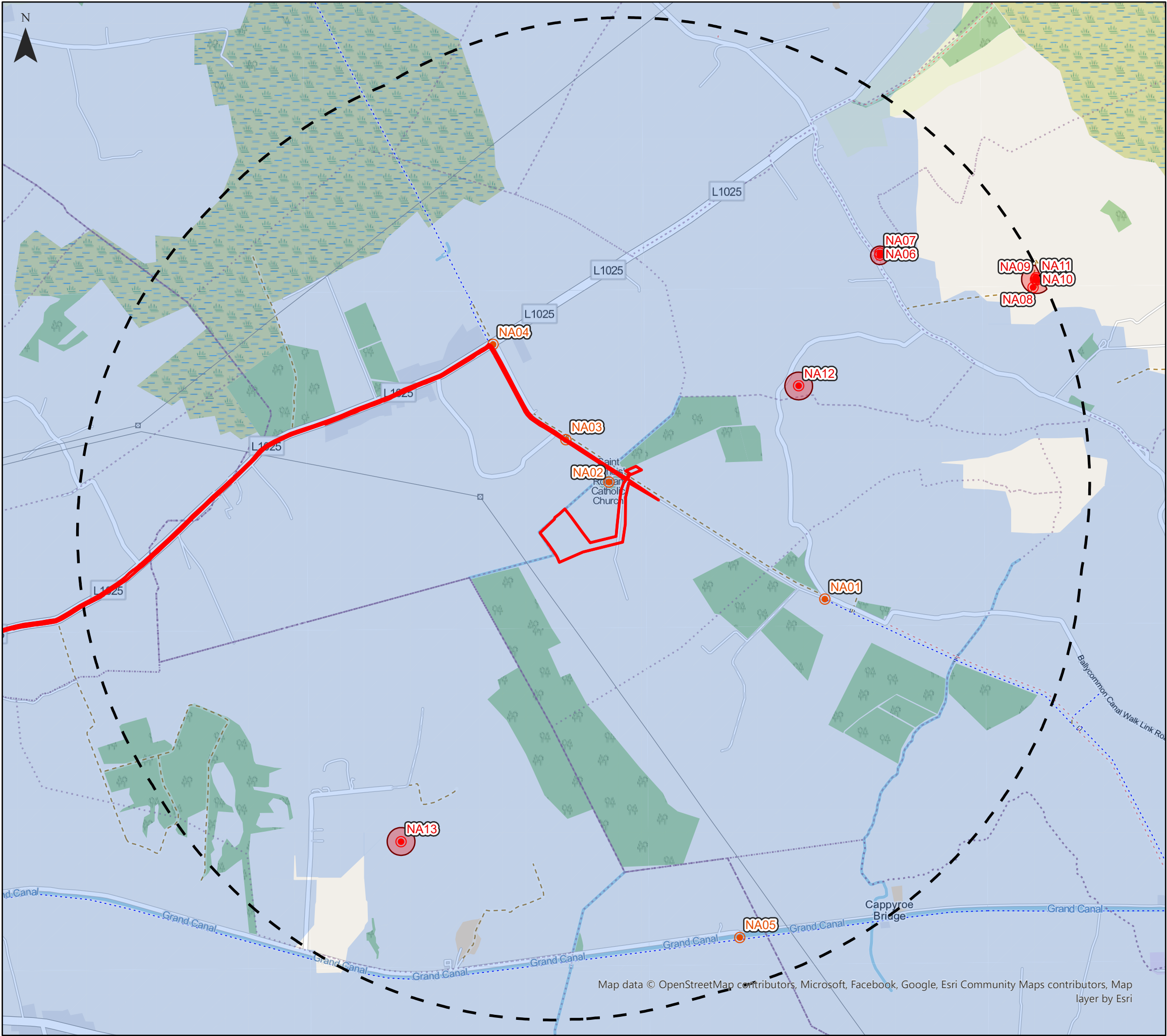




Appendix 3A – Figures



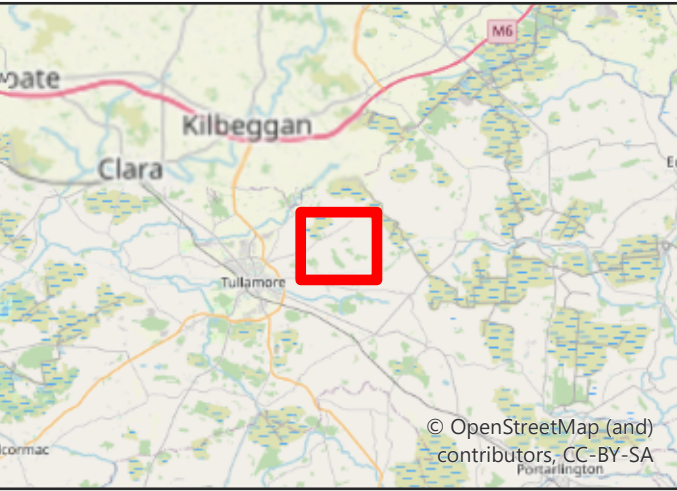
Colehill 110kV Substation
Heritage Assets within 2km
Figure 3.1

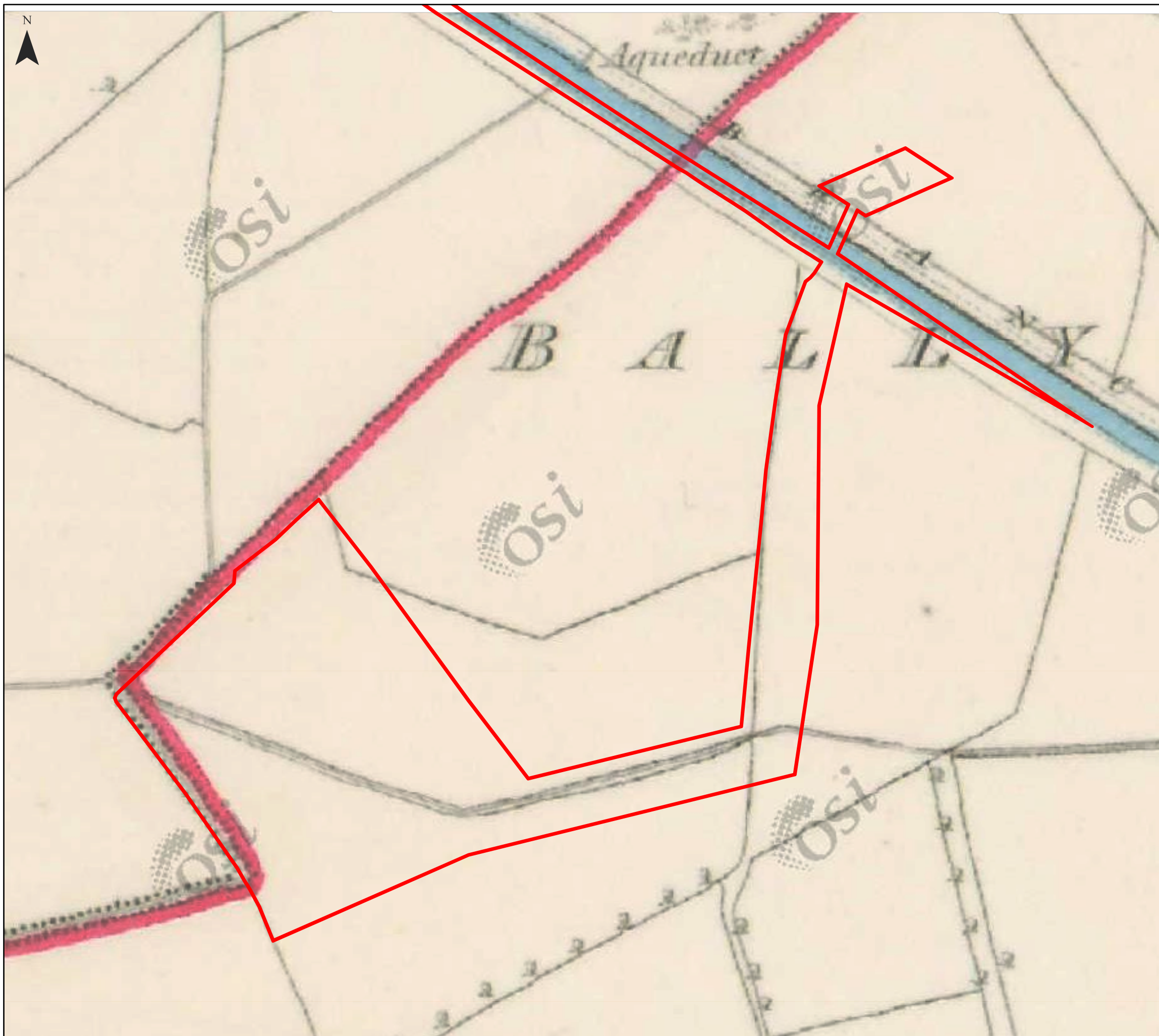


Key

- Development Boundary
- 2km Study Area
- National Inventory of Architectural Heritage
- Record of Monuments and Places
- Zones of Notification
- Zone of Theoretical Visibility


Neo Office Address:
Johnstown Business Centre, Johnstown House, Naas, Co. Kildare



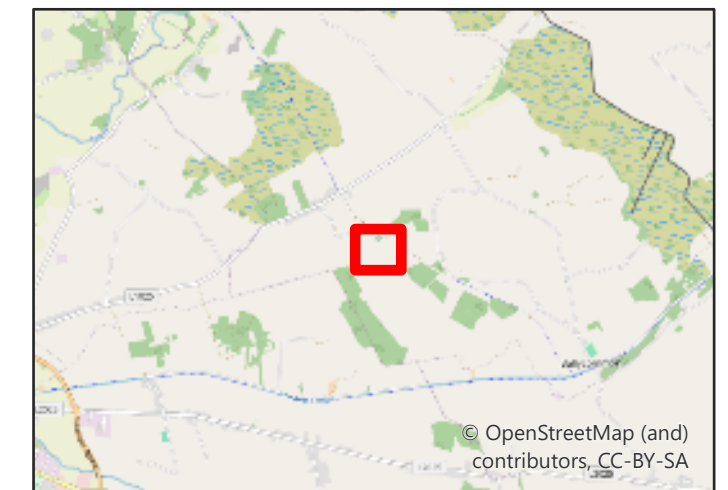


Colehill 110kV Substation
OSI 6" Historic Map (1829-1842)
Figure 3.2

Key

 Development Boundary

Neo Office Address:
Johnstown Business Centre, Johnstown House, Naas, Co. Kildare

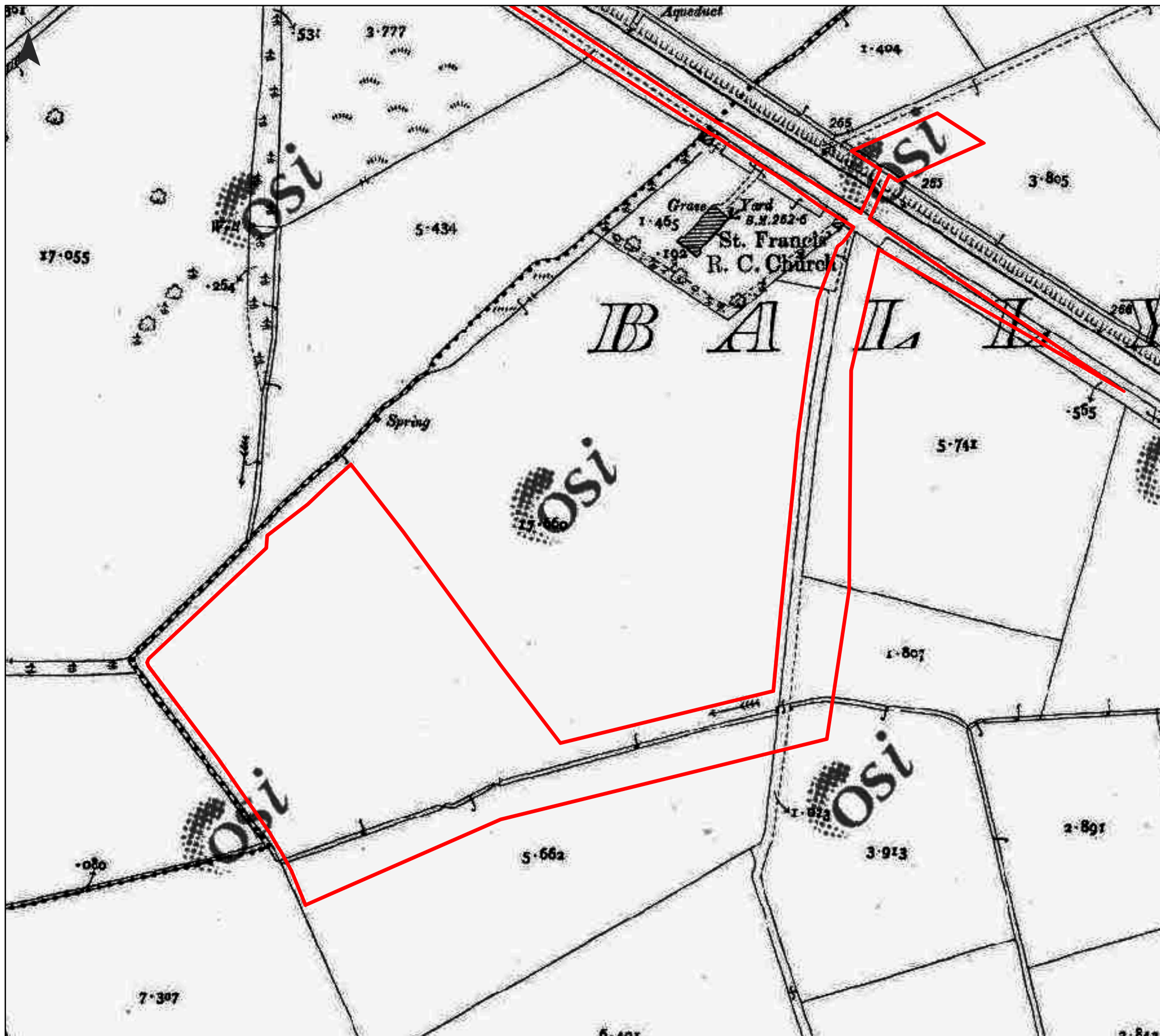


0 50 100 200 Metres

Ordnance Survey Ireland Licence No. CYAL50297096


Date: 23/01/2023
Drawn By: Michael Briggs
Scale (A3): 1:2,000
Drawing No: NEO01104/002IA



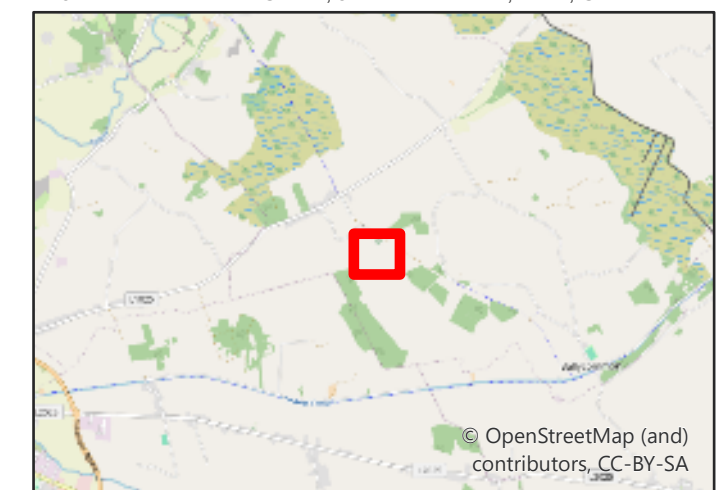


Colehill 110kV Substation
OSI 25" Historic Map (1897-1913)
Figure 3.3

Key

 Development Boundary

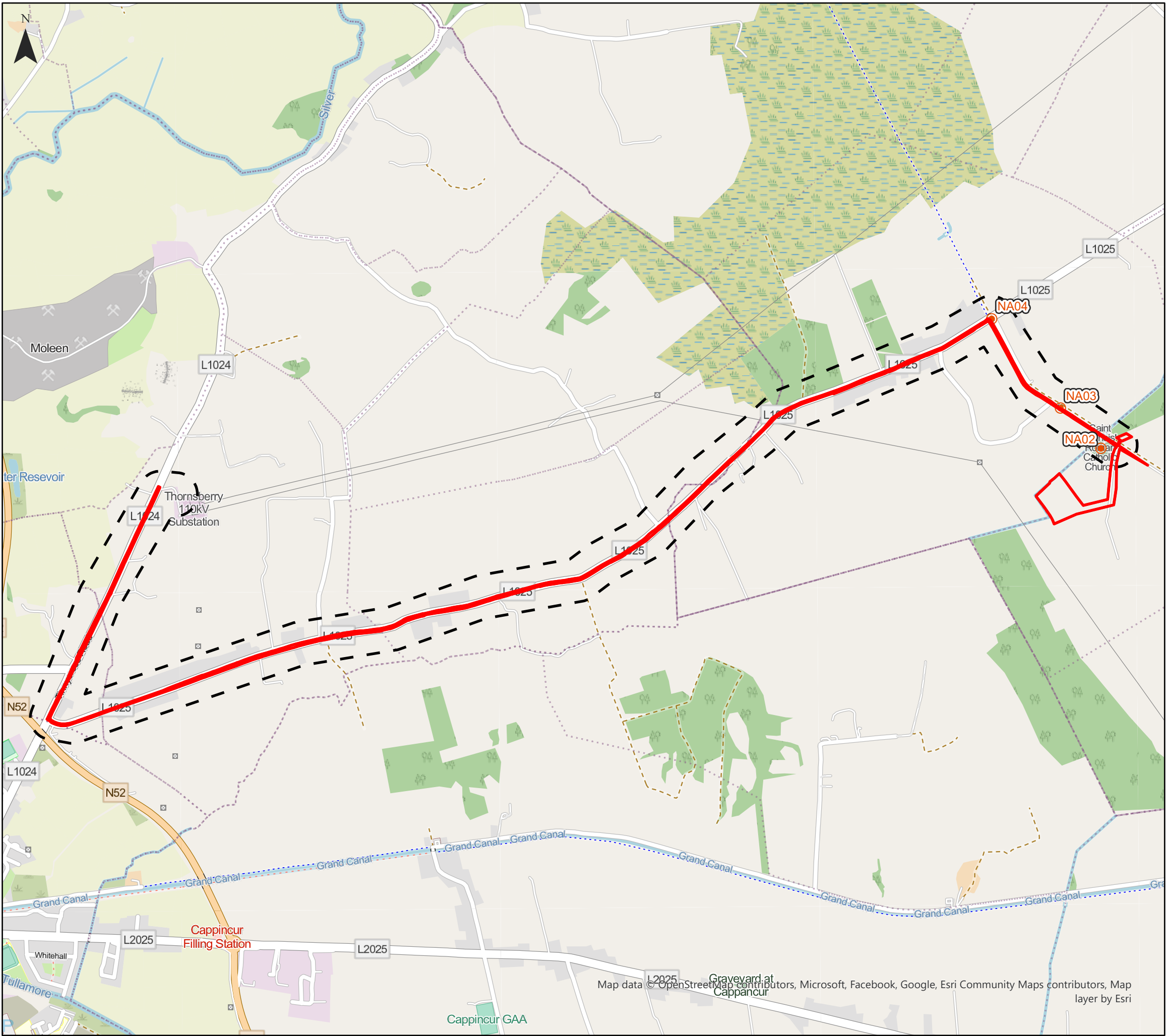
Neo Office Address:
Johnstown Business Centre, Johnstown House, Naas, Co. Kildare



Date: 23/01/2023
Drawn By: Michael Briggs
Scale (A3): 1:2,000
Drawing No: NEO01104/003IA



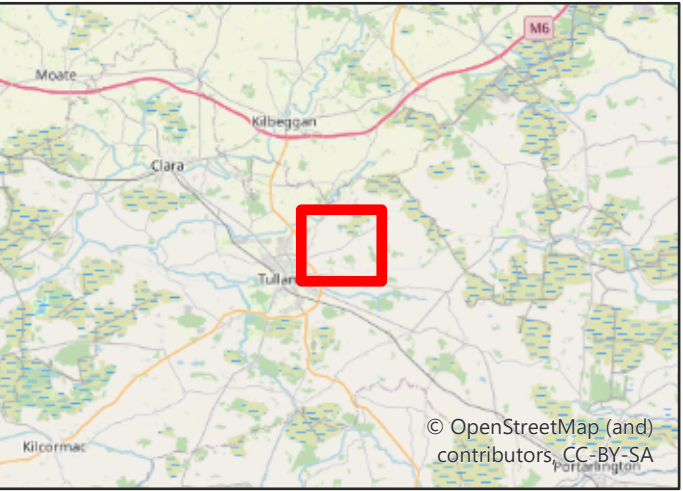
Ordnance Survey Ireland Licence No. CYAL50297096



Colehill 110kV Substation
Heritage Assets near
Indicative Grid Route
Figure 3.4

- Key
- Development Boundary
 - 100m Study Area (Grid Route)
 - National Inventory of Architectural Heritage

Neo Office Address:
Johnstown Business Centre, Johnstown House, Naas, Co. Kildare



Date: 23/10/2024
Drawn By: Michael Briggs
Scale (A3): 1:17,500
Drawing No: NEO01104/0201A





Appendix 3B – Table of Heritage Assets



Table 1: Heritage Assets within the 2km Study Area (Proposed Substation Site)

Neo Ref.	Database No.	Name	Distance (km)	Indirect Impact
National Monuments in State Care				
None				
Historic Gardens and Designed Landscapes				
None				
Historic Buildings within the National Inventory of Architectural Heritage				
NA01	NIAH 14917028 RPS 24-07	Odlum's Bridge	0.93	Negligible
NA02	NIAH 14917031 RPS 24-10	Saints Francis of Assisi and Bridget RC Church	0.07	Low
NA03	NIAH 14917032 RPS 24-11	Tong's Bridge	0.32	Low to negligible
NA04	NIAH 14917033 RPS 24-12	Wood of O Bridge	0.80	Negligible
NA05	NIAH 14917034 RPS 24-13	23 rd Lock, Grand Canal	1.80	Negligible
Sites within the Record of Monuments and Places (to 2km)				
NA06	OF009-027001-	Cairn – unclassified	1.47	Negligible
NA07	OF009-027002-	Bullaun stone	1.47	Negligible
NA08	OF009-028----	Stone head (present location)	1.95	Not in ZTV
NA09	OF009-029001-	Castle – unclassified	1.97	Not in ZTV
NA10	OF009-029002-	Castle – motte	1.97	Not in ZTV
NA11	OF009-029003-	Stone head	1.97	Not in ZTV
NA12	OF017-003----	Enclosure	0.85	Negligible
NA13	OF017-007----	Enclosure	1.40	Negligible

Table 2: Heritage Assets within the 100m Study Area (cable route)

Neo Ref.	Database No.	Name	Distance (km)	Indirect Impact
National Monuments in State Care				
None				
Historic Gardens and Designed Landscapes				
None				
Historic Buildings within the National Inventory of Architectural Heritage				

NA02	NIAH 14917031 RPS 24-10	Saints Francis of Assisi and Bridget RC Church	0.07	Low
NA03	NIAH 14917032 RPS 24-11	Tong's Bridge	0.32	Low to negligible
NA04	NIAH 14917033 RPS 24-12	Wood of O Bridge	0.80	Negligible
Sites within the Record of Monuments and Places (to 2km)				
<i>None</i>				



Appendix 3C – Plates



Plate 1 – Views north from within substation field



Plate 2 – Views east from within substation field



Plate 3 – Views south from within substation field



Plate 4 – Views west from within substation field



Plate 5 – Wet grassland at southern extent of substation field, facing northeast

